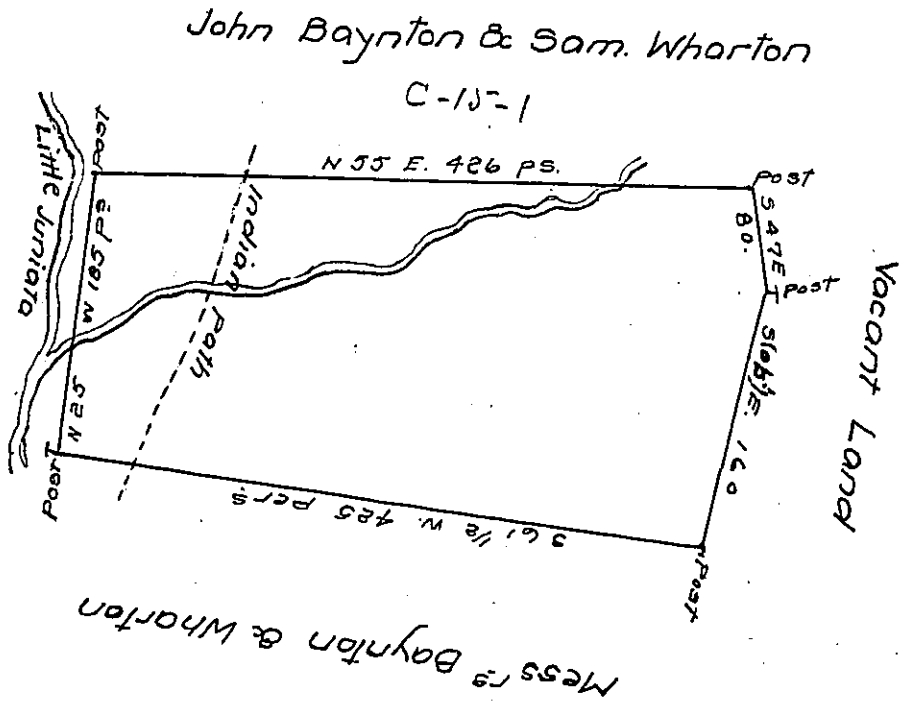


7/18



A Draught of a tract of land situate on Little Juniata and on the path leading to Sasquahannah in the County of Cumberland called the ~~the~~ Walnut Ridge, containing four hundred and eighty one acres, and the usual allowance of six acres $\frac{1}{2}$ for roads &c. Surveyed for John Baynton and Samuel Wharton in pursuance of a warrant dated the 28th day of July 1766.

R Richard Tea Dep^y. Survey^r

To John Lukens Esq^r
Survey^r Gen^l

See book G. 437.

for reservey.

IN TESTIMONY that the above is a copy of the original remaining on file in the Department of Internal Affairs of Pennsylvania, made conformably to an Act of Assembly approved the 16th day of February, 1833, I have hereunto set my Hand and caused the Seal of said Department to be affixed at Harrisburg, this Eighteenth day of November 1919

Jan F. Strover
Secretary of Internal Affairs.